



Public Fishing Rights Maps

Chautauqua Creek

Chautauqua Creek Steelhead Section



Description of Fishery

Chautauqua Creek flows northerly for over 15 miles before entering Lake Erie near Westfield, offering anglers a diversity of cold water fishing opportunities. Between October and April, steelhead runs from Lake Erie provide outstanding action from the mouth upstream to the Westfield Water Works dam. A 1.3 mile catch and release section for steelhead is located on the upper end of this section. Wild resident rainbow trout and some wild brown trout are found in the “gorge” section above the Water Works dam upstream to Putnam Road. The stream is stocked with 350 yearling brown trout at Lyons Road each spring. There are a total of 8.5 miles of public fishing rights easements on Chautauqua Creek. In addition to the public fishing rights areas on the upper creek, access to the gorge section can be attained from the Chautauqua Gorge State Forest.

Trout Fishing Regulations

Mouth to Westfield Water Works dam (except section below): **Trout and salmon; open all year, 12 inch minimum size, daily limit 3 per person.**

S. Gale Street Bridge upstream 1.3 miles to Westfield Water Works Dam: **Trout and salmon; open all year, catch and release, artificial lures only.**

Westfield Water Works dam to headwaters: **Trout; April 1 - Oct 15, any size, daily limit of 5 with no more than 2 longer than 12 inches.**

Check fishing regulation guide for other Great Lakes tributary regulations that may apply.

Primary Fish Species

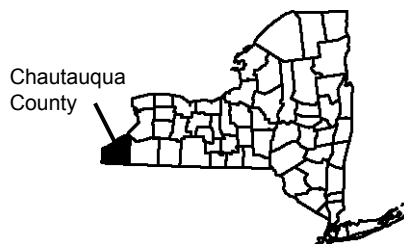
Rainbow Trout



Brown Trout



Location



About Public Fishing Rights

Public Fishing Rights (PFR’s) are permanent easements purchased by the NYSDEC from willing landowners, giving anglers the right to fish and walk along the bank (usually a 33’ strip on one or both banks of the stream). This right is for the purpose of fishing only and no other purpose. Treat the land with respect to insure the continuation of this right and privilege. Fishing privileges may be available on some other private lands with permission of the land owner. Courtesy toward the land-owner and respect for their property will insure their continued use.

These generalized location maps are intended to aid anglers in finding PFR segments and are not survey quality. Width of displayed PFR may be wider than reality to make it more visible on the maps. Please look for this PFR sign to ensure that you are in the right location and have legal access to the stream bank.

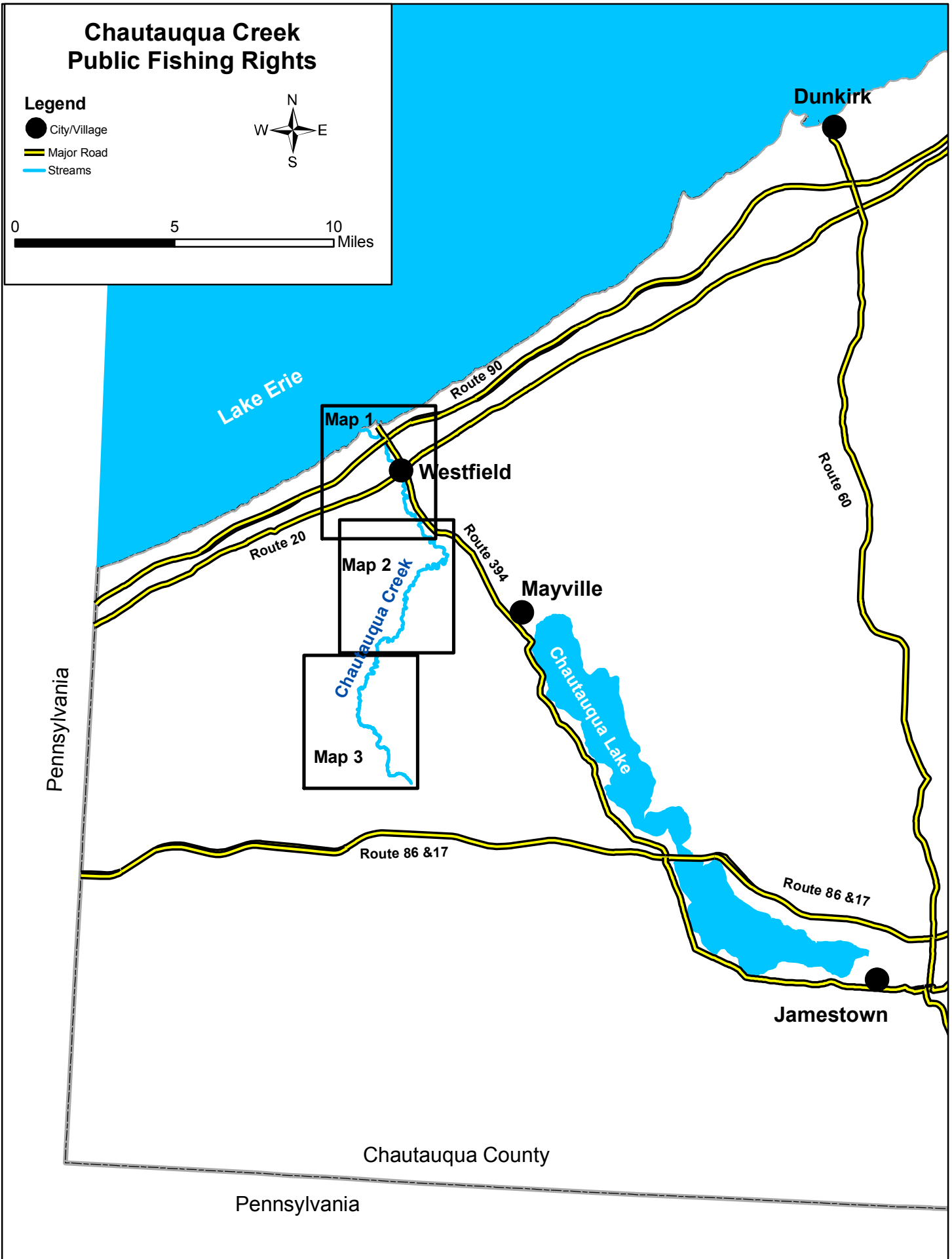
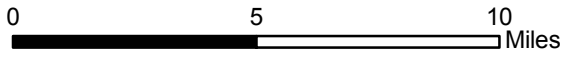


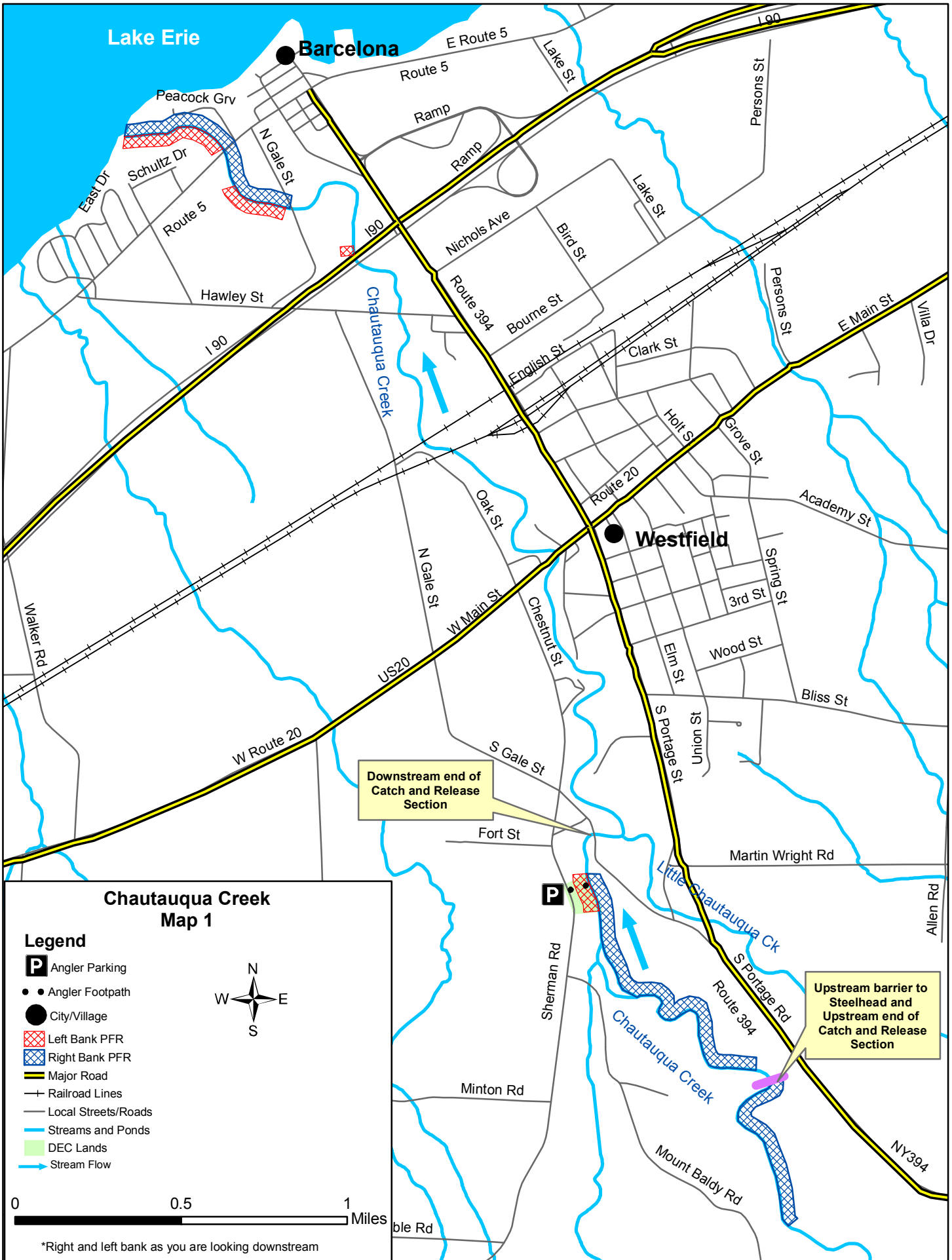
For more information on this creek or if you believe PFR marked areas on these maps are incorrect or missing PFR signs, please call the Region 9 Fisheries office: (716) 372-0645.

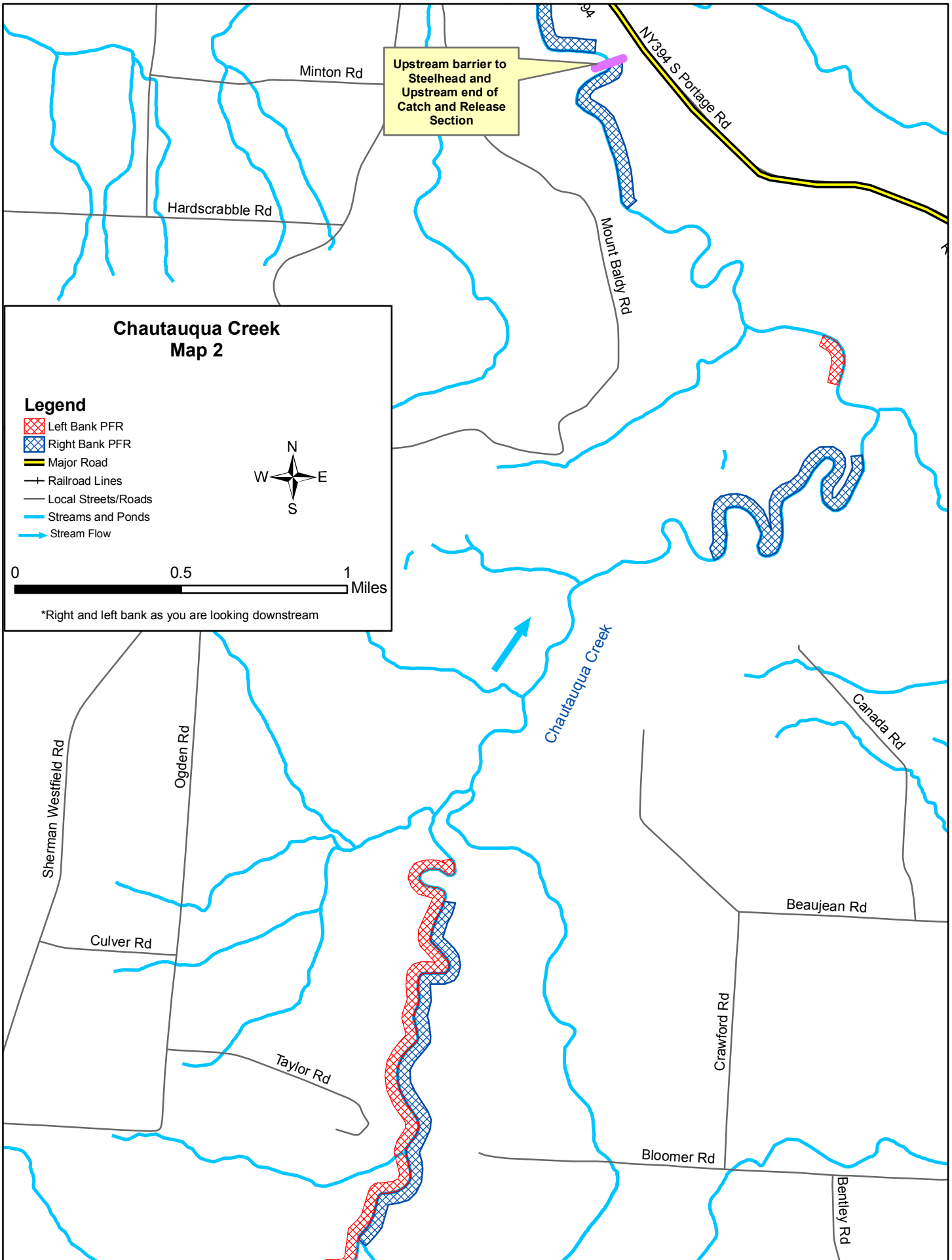
Chautauqua Creek Public Fishing Rights

Legend

- City/Village
- ▬ Major Road
- ▬ Streams



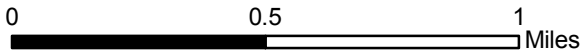




Chautauqua Creek Map 3

Legend

- Left Bank PFR
- Right Bank PFR
- Major Road
- Railroad Lines
- Local Streets/Roads
- Streams and Ponds
- DEC Lands
- Stream Flow



*Right and left bank as you are looking downstream

